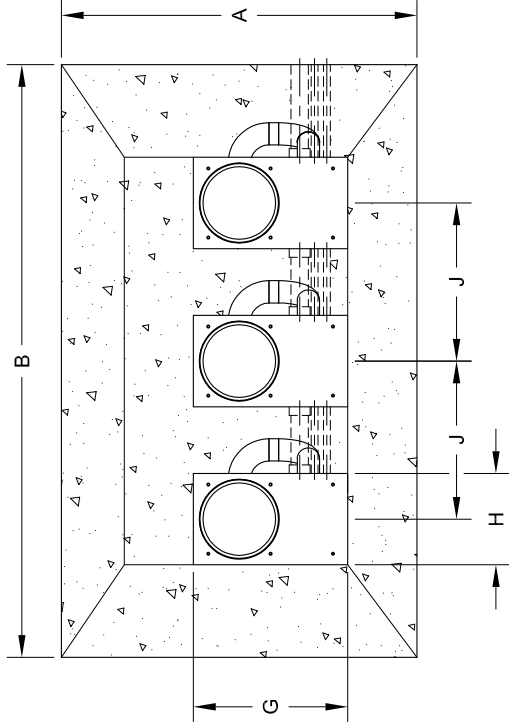


Dimension	A	B	C	D	E	F	G	H	J
Inch	72.00	120.00	66.62	38.00	10.75	60.62	31.25	18.50	<32.00
mm	1829	3048	1692	965	273	1540	794	470	<914

Notes:

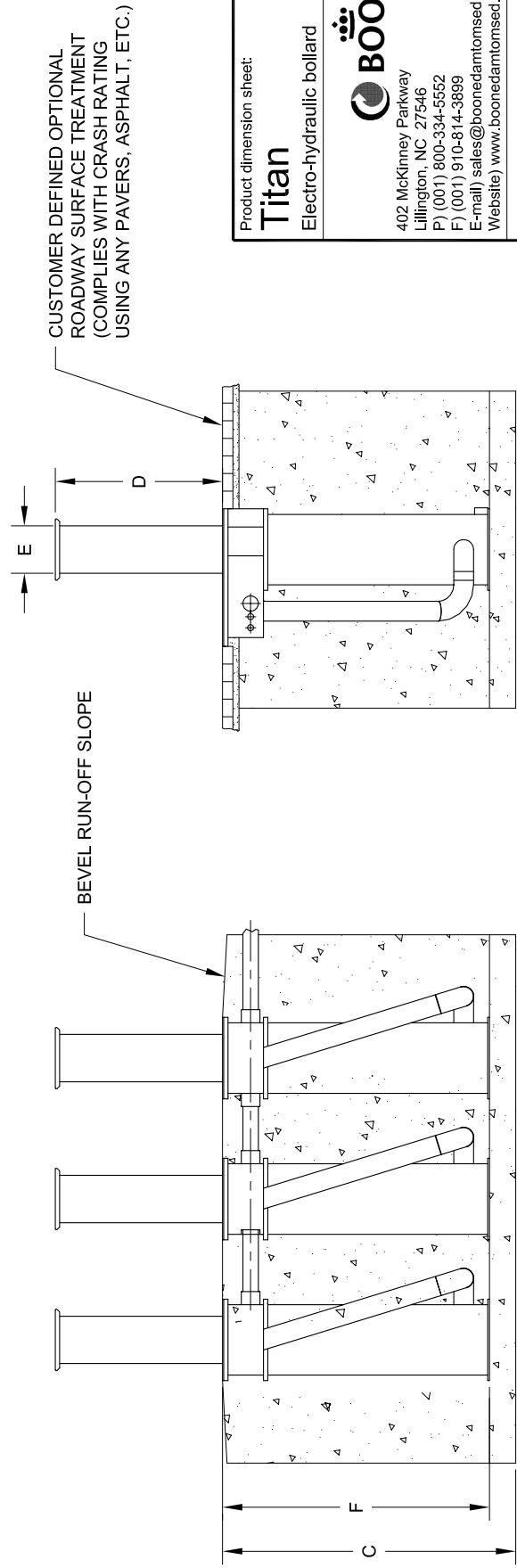
1. The Titan is K12 certified by the U.S. Department of State (DOS).
2. Standard DOS crash rating bollard spacing is not to exceed 32 inches [813mm].
3. Standard configuration with 3 bollards shown. Additional bollard configurations are available.
4. All steel parts are standard hot dipped galvanized for corrosion protection.
5. High visibility yellow paint is standard. Custom specified paint colors are available.
6. Heaters are available for cold weather applications.
7. Hydraulic Power Unit (HPU) and Operator Control Panels are not shown.
8. Weather-proof HPU enclosure is standard.
9. Traffic signal lights, warning lights, vehicle detector loops, and other accessories are available.
10. Up to 4 inches (10mm) of decorative roadway material can be used around barrier.
11. Construction and installation by others, such as concrete foundation, rebar, roadway surface, conduit, wiring and hydraulic hoses.



TOP (PLAN) VIEW



DIRECTION OF VEHICLE ATTACK



FRONT (ELEVATION) VIEW

SIDE (ELEVATION) VIEW

Product dimension sheet:
Titan
Electro-hydraulic bollard



402 McKinney Parkway
Lillington, NC 27546
P) (001) 800-334-5552
F) (001) 910-814-3899
E-mail) sales@boonedamtomised.com
Website) www.boonedamtomised.com

Drawing:
Rev: none
Sheet: 1 of 2

This drawing is for general information purposes only and it is not to be used for project design. Boon Edam Tomised reserves the right to make product adaptations at any time.

Model:
TBA